

UNIT 1

END-CAP UNIT



FOR LEASE 41,600 SF

8551-1 WESTSIDE INDUSTRIAL DRIVE

JACKSONVILLE, FL 32219

<http://www.8551westsideindustrialdrive.com/>



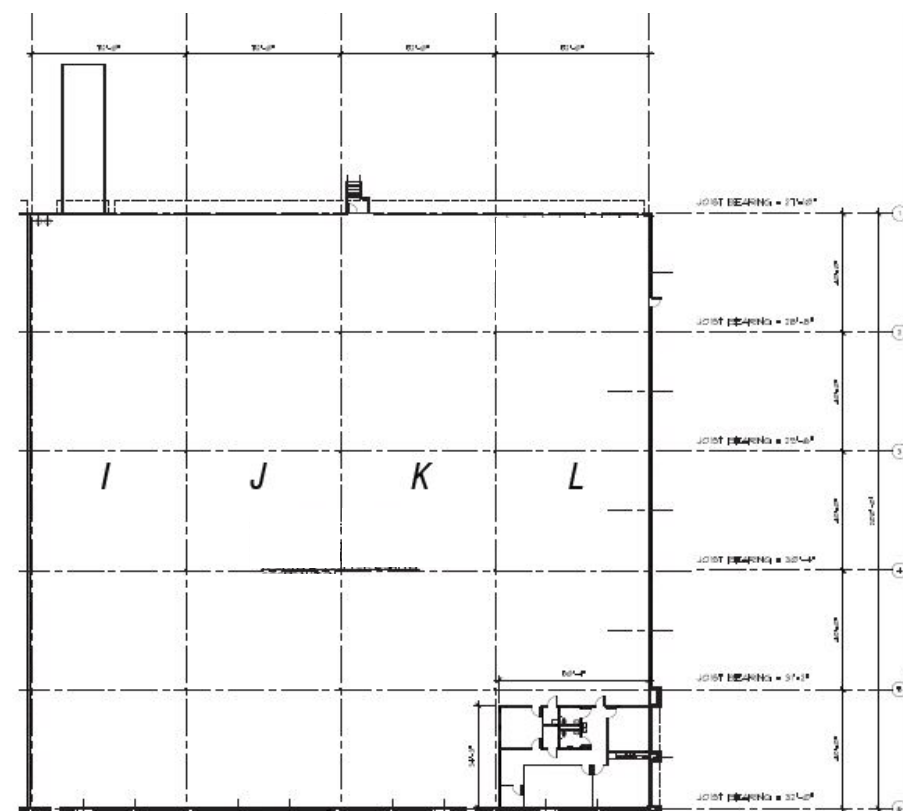
WESTSIDE INDUSTRIAL PARK

8551 Westside Industrial Dr, Unit 1

Ideal distribution, manufacturing and/or warehouse space located within Westside Industrial Park. End cap unit with functional layout.

Property Features

Space Available:	+/- 41,600 SF
Office Area:	+/- 1,721 SF
Site Area:	10.24 Acres
Clear Height:	28'
Docks:	13 (9' x 10')
Drive in:	1 (12' x 14')
Year Built:	2005
Truck Court:	120'
Sprinkler:	ESFR
Column Spacing:	52' x 40'
Power:	200 Amp; 277/480V; 3 Phase
Zoning:	PUD
Lighting:	T-5
Climate Control:	HVAC in warehouse

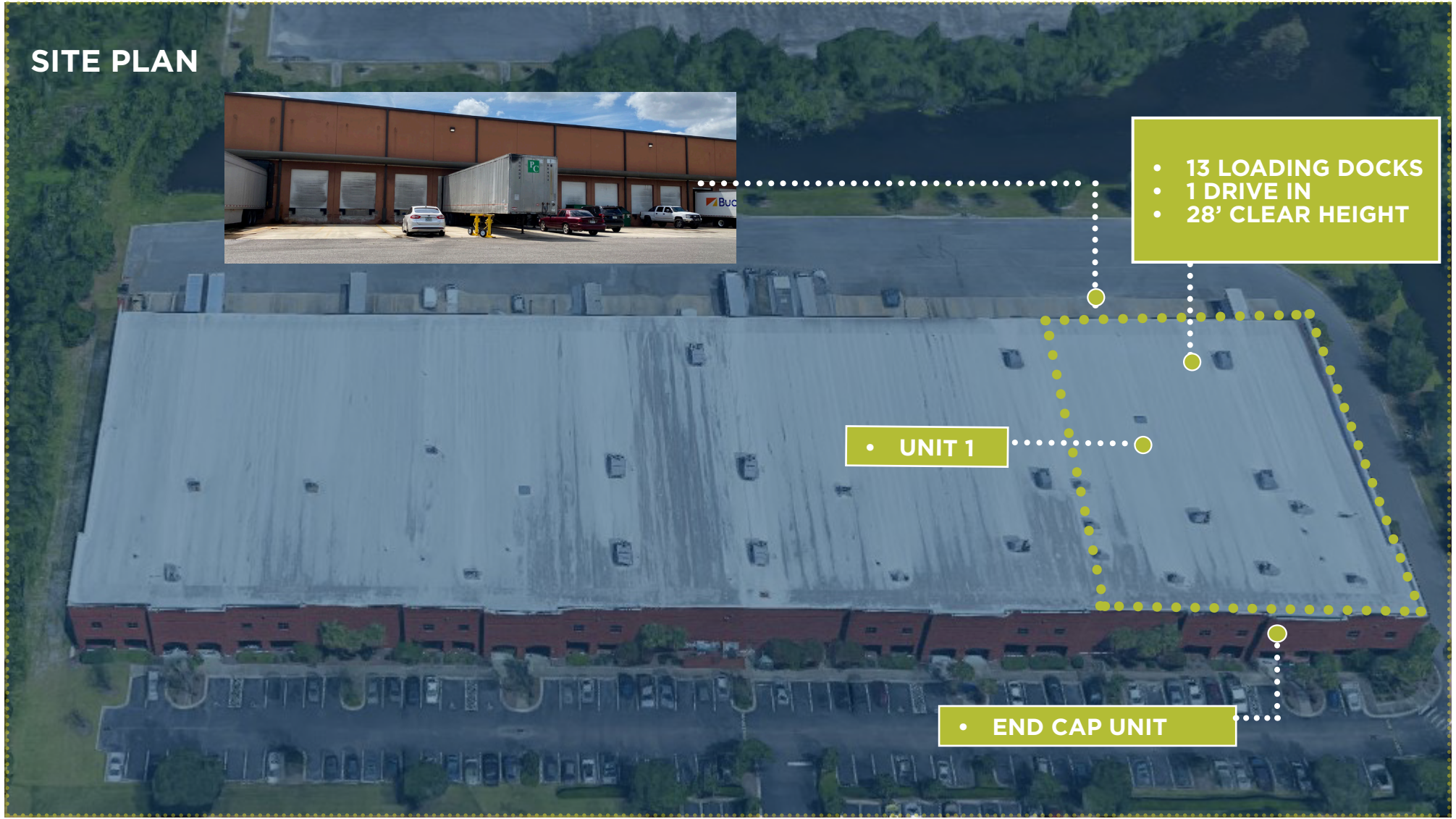


FUNCTIONAL WAREHOUSE LAYOUT

8551-1 WESTSIDE INDUSTRIAL DRIVE

JACKSONVILLE, FL 32219

SITE PLAN



Located in Westside Industrial Park, a premier industrial park with easy access to major highways, JAX Airport and JAXPORT.

8551-1 WESTSIDE INDUSTRIAL DRIVE JACKSONVILLE, FL 32219

8551 Westside Industrial Drive



FOR MORE INFORMATION, CONTACT:

TYLER NEWMAN, CCIM

Managing Director
+1 904 380 8336
tyler.newman@cushwake.com

JACOB HORSLEY

Senior Director
+1 904 380 8335
jacob.horsley@cushwake.com

©2021 Cushman & Wakefield. All rights reserved. The material in this presentation has been prepared solely for information purposes, and is strictly confidential. Any disclosure, use, copying or circulation of this presentation (or the information contained within it) is strictly prohibited, unless you have obtained Cushman & Wakefield's prior written consent. The views expressed in this presentation are the views of the author and do not necessarily reflect the views of Cushman & Wakefield. Neither this presentation nor any part of it shall form the basis of, or be relied upon in connection with any offer, or act as an inducement to enter into any contract or commitment whatsoever. NO REPRESENTATION OR WARRANTY IS GIVEN, EXPRESS OR IMPLIED, AS TO THE ACCURACY OF THE INFORMATION CONTAINED WITHIN THIS PRESENTATION, AND CUSHMAN & WAKEFIELD IS UNDER NO OBLIGATION TO SUBSEQUENTLY CORRECT IT IN THE EVENT OF ERRORS.



GTM Research Reserve
CUSHMAN & WAKEFIELD